

## Excitement is in the Air!



Bill Scott  
Great Lakes Energy  
President/CEO

Excitement is literally in the air at Great Lakes Energy. Look up and you will see crews stringing fiber cable to our utility poles in Emmet County. They're bringing Truestream, our new fiber internet service, to GLE members in our Petoskey service area.

The Petoskey service district includes most of Emmet and small parts of Charlevoix and Cheboygan counties (see map).

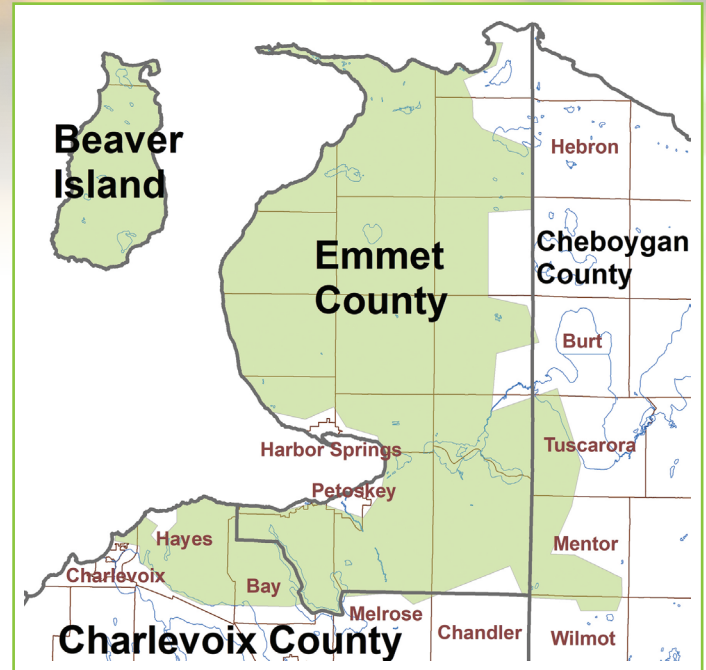
Select members in this district will be eligible for Truestream as early as this fall.

The service will first become available to a group of approximately 700 members with overhead service along the main fiber line that is set to be completed this summer. Service to other areas will branch off from this main line and become available in 2019 and 2020.

Installation of the service into homes and businesses will be done by GLE installation technicians who will provide the service you expect from your co-op.

We expect the first phase of the project to be successful and lead to expansion of the service to members in our other service districts. Truestream is a 100% wholly-owned, for-profit subsidiary of Great Lakes Energy. In the longer term, profits expected from the new venture could be used to offset costs of electric service and stabilize rates or be returned to members as capital credit refunds.

Even if you're not in the Petoskey service district, you can still share in the excitement by visiting our new web site, [jointruestream.com](http://jointruestream.com). Please register on the site if you would like to see Truestream come to your neighborhood. During the registration process, you will learn about the appealing price packages being offered and much more about this exciting new service.



Most importantly, your registration will help us gauge member interest and better determine where Truestream will go next. Member demand will be one of the important deciding factors in our expansion plans in the years ahead.

There are also ideas on the website for how to get involved in rallying support for Truestream among your neighbors and friends. Receive updates on new developments as well.

Please check out the new website and register your interest today.



## RECYCLE BULBS

### AT GREAT LAKES ENERGY

Recycle your used compact fluorescent lightbulbs (CFLs) and LED lightbulbs at your local Great Lakes Energy office.

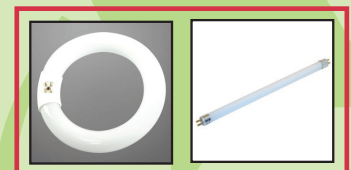
Only compact fluorescent and LED lightbulbs will be accepted.

Great Lakes Energy is looking out for you by providing a COMPAK Recycling Center box in the lobbies of its eight service centers. Simply place your CFLs and LEDs in the environmentally-secure container. The co-op will ship them to Next Level for Recycling, Inc. (NLR) which disposes of waste products quickly and properly. CFLs and LEDs help you save energy.

#### ACCEPTED



#### NOT ACCEPTED



# Tell us how we're doing!

## You could win a \$25 gift of energy

**W**e'd like to hear from you. Have you had a positive interaction with a GLE employee? Tell us about it and you could win a \$25 gift of energy.

Contact us with specific details of the interaction, including the employee name, by phone, mail or email. You can also share the feedback through an online form or on our Facebook page. We'll print all of your

great comments in our employee newsletter. Employees who are recognized will be entered in a quarterly, random prize drawing. Plus we'll award the member who submitted the winning employee's feedback a \$25 gift of energy!

We also welcome any suggestions or concerns with our service. While we won't print these in our

employee newsletter, we will work with you to resolve your concern as quickly as possible.



## Share your feedback today.

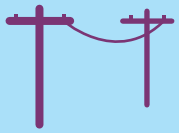
Please be specific and include the employee name.

888-GT-LAKES | [glenergy@glenergy.com](mailto:glenergy@glenergy.com)  
[gtlakes.com/honorroll](http://gtlakes.com/honorroll) | [facebook.com/greatlakesenergy](https://www.facebook.com/greatlakesenergy)



## We're Keeping the Lights On

Reliable service means fewer power outages. We're making improvements to provide you with better service.



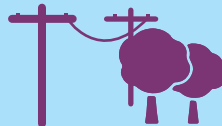
More Power Line Protection Devices



New Technology

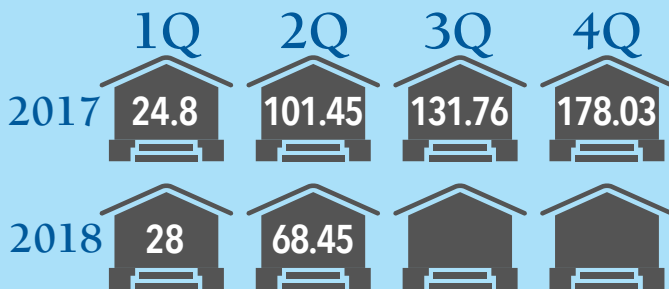


Major Power Line Improvements



Aggressive Tree Maintenance

## AVERAGE OUTAGE MINUTES YEARLY COMPARISON

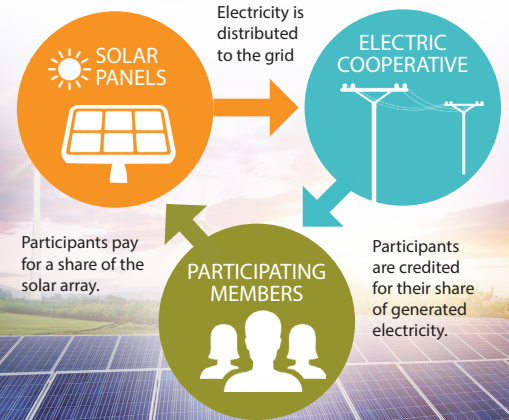


Our Yearly Goal:  
Under 166.3 Minutes

## Community Solar Subscriptions Available

### OPTION DETAILS

- 15-year agreement
- Credit of \$0.10/kWh generated
- \$600/panel upfront or \$10 monthly (for 5 years) payment subscription



**\$150 rebate** available until Nov. 30, 2018 for residential/seasonal members who pay upfront.

Visit [spartansolar.com](http://spartansolar.com) and subscribe today.



Your Touchstone Energy® Cooperative

### Looking Out for You

1323 Boyne Avenue, P.O. Box 70; Boyne City, MI 49712

**WEB:** [gtlakes.com](http://gtlakes.com)

**TEL:** 888-GT-LAKES (888-485-2537)

**EMAIL:** [glenergy@glenergy.com](mailto:glenergy@glenergy.com)

**FACEBOOK:** [facebook.com/greatlakesenergy](https://www.facebook.com/greatlakesenergy)

Great Lakes Energy is an equal opportunity provider and employer.



**SAVINGS**  
*made*  
**SIMPLE**

## Claim Your **FREE** Energy-Saving Products!

The Home Energy Express Program provides **FREE** delivery and installation of energy-saving products, such as:

- Efficient lighting
- Smart power strip
- Water-saving devices
- Smart or programmable thermostat  
(pending eligibility)

**ONLINE:** [michigan-energy.org](http://michigan-energy.org)    **PHONE:** 877.296.4319



Energy Optimization programs and incentives are applicable to Michigan electric service locations only. Other restrictions may apply. For a complete list of participating utilities, visit [michigan-energy.org](http://michigan-energy.org).



# Beat the Heat and Save

**Stay cool this summer while saving energy. Here are a few tips to help:**

- **Turn off and unplug electronics, and head outside!** Computers, televisions, and other electronics use energy when they're plugged in even though they're turned off.
- **Grill it!** On hot days, consider using an outdoor grill instead of your oven to keep your home cooler.
- **Consider air drying clothes.** Save energy and enjoy the fresh scent of clothes dried on a clothes line.

**ONLINE:** [michigan-energy.org](http://michigan-energy.org)    **PHONE:** 877.296.4319

Energy  
Op

 **Great Lakes  
ENERGY**  
Your Touchstone Energy® Cooperative 

Energy Optimization programs and incentives are applicable to Michigan electric service locations only. Other restrictions may apply. For a complete list of participating utilities, visit [michigan-energy.org](http://michigan-energy.org).