

Warm Up To Energy Saving Ideas



Bill Scott
Great Lakes Energy
President/CEO

February may be one of the coldest months in Michigan but it also has its own beauty. Snow settled on branches and the formations of ice against the window pane, as well as the numerous winter activities

we enjoy, help distract us from how far away spring can seem. But as temperatures drop it is difficult not to notice the rise in your electrical bill as heating systems work harder to keep us warm. Like many, you may wonder what opportunities are available to help reduce higher energy bills.

Thankfully Great Lakes Energy is able to offer solutions. Through our Energy Optimization program, we offer a number of services to make your home more energy efficient. Most already know to look for products, such as lightbulbs and appliances, with the familiar Energy Star label. If you are looking for options tailored to your specific home, our free online Home Audit can give you a personalized assessment for energy saving options. Simply complete an online survey (it takes less than 10 minutes) and you will receive a report with energy saving

tips and recommendations for your home along with a free energy savings kit. The kit includes a smart power strip, energy efficient lightbulbs, pipe wraps, and water saving accessories. This program is offered to all GLE members, regardless of income.

For those wanting to improve their heating and cooling comfort, the EO program offers a variety of incentives for heat pumps. Instead of generating heat, a heat pump simply moves the heat. During cold months, it is able to draw in heat energy from outside to inside, and in the warmer summer months it cools your house by moving the warm air from your house to the outside. Total rebates for installing a new heat pump range from \$50 to over \$1,000 for a unit that can have a significant impact on lowering your bill.

As always, little changes can also positively affect the size of your bill in the winter. Wrapping pipes, changing air filters once a month, and simply putting on an extra layer of clothing are all ways you can take the load off your heating system.

We can't avoid the cold temperatures, but GLE can help make your home and pocketbook more comfortable until spring arrives.

For more information visit
www.michigan-energy.org

See Us At The Home Show



NORTHERN MICHIGAN REGIONAL HOME SHOW

MARCH 8 & 9

NORTH CENTRAL MICHIGAN COLLEGE, PETOSKEY

Visit the Great Lakes Energy booth at the home show.

Stop by and speak to a representative to learn more about Energy Optimization programs designed to save you energy and money.



Tell us how we're doing!

You could win a \$25 gift of energy

We'd like to hear from you. Have you had a positive interaction with a GLE employee? Tell us about it and you could win a \$25 gift of energy.

Contact us with specific details of the interaction, including the employee name, by phone, mail or email. You can also share the feedback through an online form or on our Facebook page. We'll print all of your great comments in our employee newsletter. Employees who are recognized will be entered in a quarterly, random prize

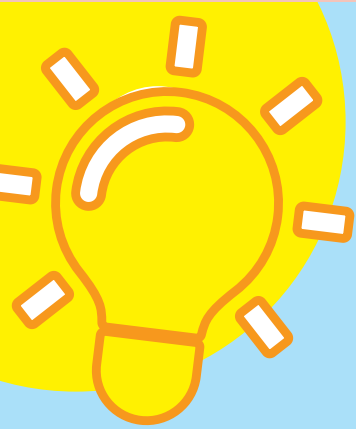
drawing. Plus we'll award the member who submitted the winning employee's feedback a \$25 gift of energy!

We also welcome any suggestions or concerns with our service. While we won't print these in our employee newsletter, we will work with you to resolve your concern as quickly as possible.

Share your feedback today.

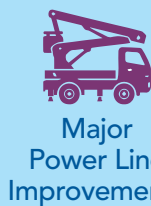
Please be specific and include the employee name.

888-GT-LAKES | glenergy@glenergy.com
gtlakes.com/honorroll | facebook.com/greatlakesenergy

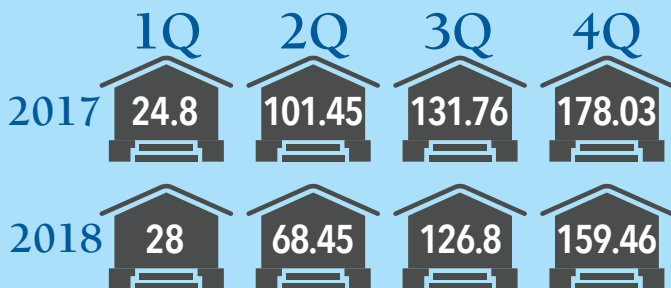


We're Keeping the Lights On

Reliable service means fewer power outages. We're making improvements to provide you with better service.



AVERAGE OUTAGE MINUTES YEARLY COMPARISON



Our Yearly Goal:
Under 166.3 Minutes
We did it!

Areas Scheduled For 2019 Re-clearing

Re-clearing of vegetation along Great Lakes Energy power lines is scheduled this year in these counties and townships:

ALLEGAN:

Gun Plain, Martin, Otsego, Watson

ANTRIM:

Mancelona, Warner, Jordan

CHARLEVOIX:

Eveline, Wilson, South Arm, Melrose, Boyne Valley

CRAWFORD:

Grayling, Lovells, South Branch, Beaver Creek

EMMET:

Resort, West Traverse, Pleasantview Bay

KALKASKA:

Cold Springs, Blue Lake, Excelsior, Rapid River

KENT:

Nelson, Solon, Tyrone

LAKE:

Chase, Cherry Valley, Lake, Pleasant Plains, Sweetwater, Webber, Yates

MASON:

Amber, Branch, Riverton

MECOSTA:

Green Charter

MONTCALM:

Pierson, Reynolds

MUSKEGON:

Montague, White River

NEWAYGO:

Barton, Ensley, Grant, Troy

OCEANA:

Benona, Claybanks, Ferry, Golden, Grant, Otto, Shelby

OSCEOLA:

Burdell, Richmond, Sherman

OSCODA:

Greenwood, Big Creek

OTSEGO:

Chester

OTTAWA:

Blendon, Holland, Olive, Zeeland

Contracted tree-trimming crews are again working this year to remove trees that pose a threat to power lines.



Your Touchstone Energy® Cooperative

1323 Boyne Avenue, P.O. Box 70
Boyne City, MI 49712

WEB: www.gtlakes.com

TEL: 888-GT-LAKES

FACEBOOK: facebook.com/greatlakesenergy

Looking Out for You

Great Lakes Energy is an equal opportunity provider and employer.