

## Elect GLE's Board of Directors



Bill Scott  
Great Lakes Energy  
President/CEO

If you're a Great Lakes Energy member in district 6, 8, or 9, please read about the candidates inside and cast your vote with the attached mail-in ballot. For all other members, your opportunity to vote will come in 2020 or 2021.

Every co-op, whether it's your

credit union or a farm co-op – follows the basic principle of one member, one vote. Most often you are asked to vote to elect fellow members who will represent you on the board of directors. These folks are your

friends, neighbors and fellow residents of your community.

Members vote for director once every three years. In my case, I'm a GLE member in district 1 so I will not be voting this year.

This year we only have one candidate running in each district. Candidates for the board are not determined by Great Lakes Energy or by current board members but by you. As a member of a democratically controlled cooperative, you play a vital role in shaping the way your co-op is run. You can run for the board seat in your district, you can sign another candidate's nominating petition, or you can simply vote.

Co-ops believe in the power of human connections and encourage your participation in the board election and is part of the cooperative difference. Visit [gtlakes.com/board-candidate-info](http://gtlakes.com/board-candidate-info) for more details.

### Districts By County

#### 2019 Election

District 6 – Lake and Mason counties

District 8 – Clare, Mecosta, Newaygo, and Osceola counties

District 9 – Allegan, Barry, Kent, Montcalm, and Ottawa counties



Beat the  
**Heat**  
and **Save**

### Stay cool this summer while saving energy. Here are a few tips to help:

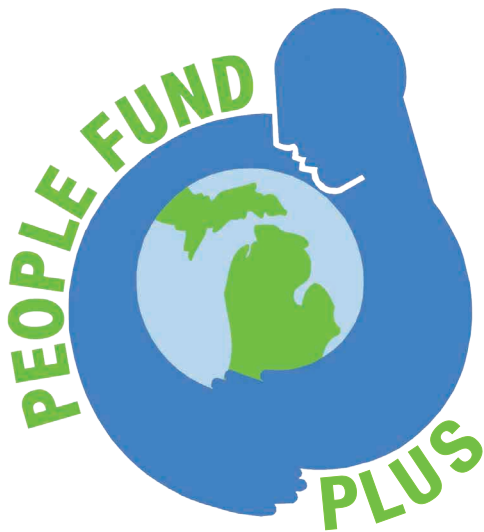
- **Turn off and unplug electronics, and head outside!** Computers, televisions, and other electronics use energy when they're plugged in even though they're turned off.
- **Grill it!** On hot days, consider using an outdoor grill instead of your oven to keep your home cooler.
- **Consider air drying clothes.** Save energy and enjoy the fresh scent of clothes dried on a clothes line.

ONLINE: [michigan-energy.org](http://michigan-energy.org) PHONE: 877.296.4319



Energy Optimization programs and incentives are applicable to Michigan electric service locations only. Other restrictions may apply. For a complete list of participating utilities, visit [michigan-energy.org](http://michigan-energy.org).

## JOIN PEOPLE FUND PLUS



Choose a People Fund donation level in addition to your rounded-up amount. Your donations are awarded in the form of grants to local community nonprofit groups.

All People Fund contributors earn the chance to win a \$100 bill credit twice per year. In 2018, the People Fund awarded \$218,770 in grants to local nonprofits. Visit [gtlakes.com](http://gtlakes.com) to see the list of grant recipients in your area or to request a grant application for your non-profit.

### Join today!

Working together, we can help enhance our local communities and meet the needs of so many.

### How it works:

**With People Fund:** Bill Amount \$65.42 + \$.58 for People Fund = \$66.00

**With People Fund PLUS:** Bill Amount \$65.42 + \$.58 for People Fund + \$2.00 for PLUS = \$68.00



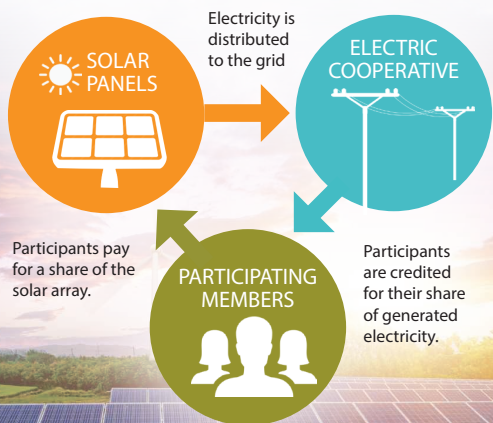
*A People Fund grant helped make a popular Ludington playground ADA accessible.*

**Contact us today to sign-up.**

## Community Solar Subscriptions Available

### OPTION DETAILS

- 15-year agreement
- Credit of \$0.10/kWh generated
- \$600/panel upfront or \$10 monthly (for 5 years) payment subscription



**\$150 rebate** for residential/seasonal members\*

\*Restrictions apply

Visit [spartansolar.com](http://spartansolar.com) and subscribe today.



## Tell us how we're doing!

**You could win a \$25 bill credit.**

**W**e'd like to hear from you. Have you had a positive interaction with a GLE employee? Tell us about it and you could win a \$25 bill credit.

Contact us with specific details of the interaction, including the employee name, by phone, mail or email. You can also share the feedback through an online form or on our Facebook page. We'll print all of your great comments in our employee newsletter. Employees who are recognized will be entered in a quarterly, random prize drawing. Plus we'll award the member who submitted the winning employee's feedback a \$25 bill credit!



We also welcome any suggestions or concerns with our service. While we won't print these in our employee newsletter, we will work with you to resolve your concern as quickly as possible.

**Share your feedback today.**

Please be specific and include the employee name.

888-GT-LAKES | [glenergy@glenergy.com](mailto:glenergy@glenergy.com)  
[gtlakes.com/honorroll](http://gtlakes.com/honorroll) | [facebook.com/greatlakesenergy](https://www.facebook.com/greatlakesenergy)



Looking Out for You

1323 Boyne Avenue, P.O. Box 70  
 Boyne City, MI 49712  
**WEB:** [www.gtlakes.com](http://www.gtlakes.com)  
**TEL:** 888-GT-LAKES  
**FACEBOOK:** [facebook.com/greatlakesenergy](https://www.facebook.com/greatlakesenergy)  
 Great Lakes Energy is an equal opportunity provider and employer.