

Elect GLE's Board of Directors – Your Vote Counts!



Bill Scott
Great Lakes Energy
President/CEO

If you're a Great Lakes Energy member in district 1, 2 or 7, please read about the candidates inside your July issue of Michigan Country Lines and cast your vote with the mail-in ballot attached to the magazine. For all other members, your opportunity to vote will come in 2019 or 2020.

Every co-op, whether it's your credit union or a farm co-op – follows the basic principle of one member, one vote. Most

often you are asked to vote to elect fellow members who will represent you on the board of directors. These folks are your friends, neighbors and fellow residents of your community.

Simply cast your vote from the comfort of your home and drop the postage-paid

ballot in the mailbox. Voting is that simple and convenient. If you lose or accidentally throw away the ballot, contact us and we'll send you another one.

Members vote for director once every three years. In my case, I'm a GLE member in district 1 so I will be voting this year.

Part of the value of being a cooperative member is everyone's vote carries equal weight. Whether it's a business with several owners or a small home with a single owner, each has one membership and one vote. In the case of a husband and wife, their joint membership entitles them to one vote.

Districts By County

2018 Election

District 1 – Emmet County

District 2 – Charlevoix and
Cheboygan counties

District 7 – Oceana and
Muskegon counties

The nine directors on the board are elected from each district for a three-year term.

Co-ops believe in the power of human connections and encourage your participation in the board election. If you live in districts 1, 2 or 7, please join me in exercising your right to vote. It's the cooperative difference.

Stay Cool and Save

Stay comfortable with a heat pump and save money, too. Save all year long because heat pumps heat and cool.

Qualifying Great Lakes Energy members whose primary heating system is a heat pump (ground or air-source) can have it separately metered at a lower kilowatt-hour (kWh) rate.

The efficient electric heat rate offers a 3 cents per kWh credit year-round for qualifying ground-source heat pumps. Qualifying air-source heat pumps can receive the credit during the heating season (bills rendered November through May).

Electric heat pump must meet these energy efficiency standards to qualify for the lower rate:

Geothermal System - minimum requirements of EER 17.1 COP 3.6 for closed loop water-to-air; EER 21.1 COP 4.1

for open loop water-to-air; EER 16.1 COP 3.1 for closed loop water-to-water; EER 20.1 COP 3.5 for open loop water-to-water; EER 16 COP 3.6 for direct geoechange.

Air-Source Heat Pump - minimum requirements of HSPF 8.5, EER 12.5, & SEER 15 for split systems and HSPF 8, EER 12 & SEER 14 for package systems.

Rebates of \$500 (ground-source) and \$250 (air-source) are available for qualifying systems. For more information on the rebates and lower rate, call us at 1-888-485-2537, ext. 8957, or email us at: glenergy@glenergy.com.

Additional heat pump rebates up to \$750 are available through our Energy Optimization program. Does the heat pump have an ECM (variable speed) blower motor and a wi-fi enabled or smart occupancy sensing thermostat? Rebates are also



available for them. Visit michigan-energy.org or call 877-296-4319.

The Michigan Geothermal Energy Association can tell you more about heat pumps and dealers in your area by visiting their web site: earthcomfort.com.

Great Lakes Energy does not sell or service heat pumps.



Tell us how we're doing!

You could win a \$25 gift of energy

We'd like to hear from you. Have you had a positive interaction with a GLE employee? Tell us about it and you could win a \$25 gift of energy.

Contact us with specific details of the interaction, including the employee name, by phone, mail or email. You can also share the feedback through an online form or on our Facebook page. We'll print all of your great comments in our employee newsletter. Employees who are recognized will be entered in a quarterly, random prize drawing. Plus we'll award the member who submitted the winning employee's feedback a \$25 gift of energy!

We also welcome any suggestions or concerns with our service. While we won't print these in our employee newsletter, we will work with you to resolve your concern as quickly as possible.



Share your feedback today. Please be specific and include the employee name.

888-GT-LAKES | glenergy@glenergy.com
gtlakes.com/honorroll | facebook.com/greatlakesenergy

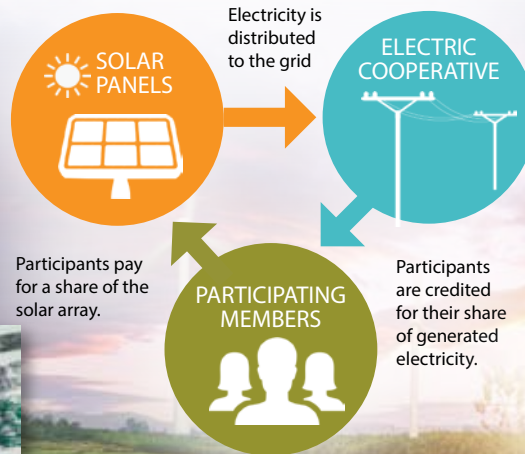


UTILITY POLES ARE NOT BULLETIN BOARDS

Think before you post that sign! Staples, nails and tacks used to hang signs and fliers create dangerous obstacles for electric lineworkers. Their jobs are dangerous enough – help us keep them safe!



Community Solar Subscriptions Available



OPTION DETAILS

- 15-year agreement
- Credit of \$0.10/kWh generated
- \$600/panel upfront or \$10 monthly (for 5 years) payment subscription

\$150 rebate available until Nov. 30, 2018 for residential/seasonal members who pay upfront.

Visit spartansolar.com and subscribe today.



Your Touchstone Energy® Cooperative 

Looking Out for You

1323 Boyne Avenue, P.O. Box 70; Boyne City, MI 49712

WEB: gtlakes.com

TEL: 888-GT-LAKES (888-485-2537)

EMAIL: glenergy@glenergy.com

FACEBOOK: facebook.com/greatlakesenergy

Great Lakes Energy is an equal opportunity provider and employer.



Introducing

Truestream.

Fiber internet powered by Great Lakes Energy.

Announcing a connection that will change your life.

Truestream, Great Lakes Energy's fiber network, will bring the unbeatable service you need from a name you can trust. With speeds up to 1 Gigabit per second (1,000 Mbps) available, Truestream will offer high-speed fiber internet and phone service to homes and businesses throughout Great Lakes Energy's service area. Construction begins in Emmet County this month with limited service available by the end of the year!

Learn more at jointruestream.com

