



GREAT LAKES  
**ENERGY**



Clearing Power Lines for  
Reliability and Safety

# VEGETATION MANAGEMENT PROGRAM

---

Visit [gtlakes.com](http://gtlakes.com)  
or call 888-485-2537



▶ Trees are a major cause of blinks and outages on Great Lakes Energy's system.

Brush growing near power lines hinders a repair crew's ability to get to damaged lines quickly and adds to the outage time. Keeping power lines clear of trees and brush is essential for safe, reliable electric service.

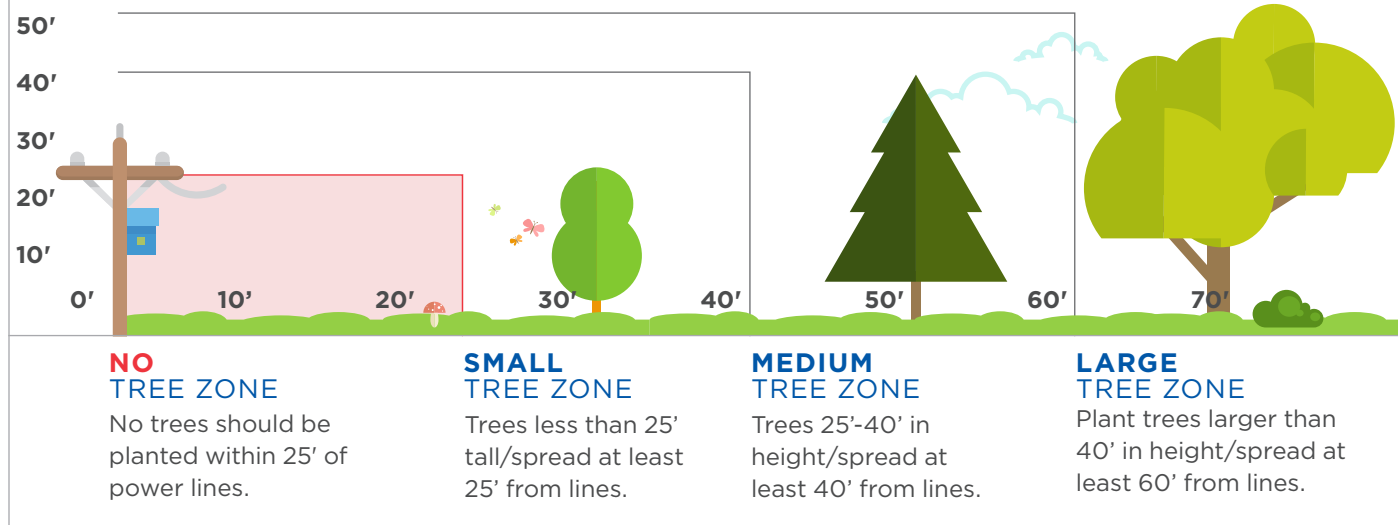
As part of an integrated program, GLE's vegetation management staff prepare and monitor the work done annually by private contractors trained to remove trees near high voltage power lines. They follow nationally recognized tree trimming standards.

# Right Tree, Right Place.

Please remember any tree in or near a power line right-of-way that poses a safety or reliability threat may be trimmed or removed.

In non-yard (non-maintained) areas GLE clears the full width of the right-of-way. You can prevent trimming or cutting of your trees by planting the right tree in the right place.

## TREE PLANTING GUIDE



## SPECIAL CONSIDERATIONS

Please do not plant trees or shrubs next to green transformer boxes (for underground electric service) and electric meters. We need access to our electrical equipment for routine maintenance and, if necessary, to restore power for you.

## Herbicide Program

After a power line right-of-way is re-cleared, it may be treated with an EPA-approved forestry herbicide that allows low growing species to later develop that pose no threat to overhead lines. Professional, state-licensed, contractors use a backpack sprayer to apply low-volume herbicide. Property owner's permission is obtained prior to all herbicide application.

## MISS DIG



Always contact MISS DIG at [missdig.org](http://missdig.org) or call 811 or 800-482-7171 to locate underground electric or other utilities should you have the need to dig.

▶ This is a free service and it's the law!





## More Information

Removing trees near power lines can be dangerous. If you see a tree that is endangering the electric line, please call us.

Always assume power lines are energized. Never attempt to remove a tree near or on a power line. Stay back and call GLE for assistance. Also, never let children play in trees that are close to power lines.

▶ **Contact us with any questions, concerns, or comments. GLE's Arborists/Utility Specialists certified through the International Society of Arboriculture are available to assist members.**



## Member Notification

Automated phone calls, post card mailings and e-mails notify members if tree-trimming contractors will be working near power lines on their property. In addition, announcements appear in *Michigan Country Lines* and on [gtlakes.com](http://gtlakes.com). The contractor also knocks on doors prior to work being done. Please keep your phone and email records up-to-date to ensure we can reach you.



As a participant in the National Wild Turkey Federation's Energy for Wildlife Program, we regularly do projects to improve wildlife habitat within our power line rights-of-way.



Power. Purpose. **You.**

 [gtlakes.com](http://gtlakes.com)

 (888) 485-2537

1323 Boyne Avenue,  
P.O. Box 70, Boyne City, MI 49712

*Great Lakes Energy is an equal opportunity provider and employer.*

UPDATED FEBRUARY 2020